

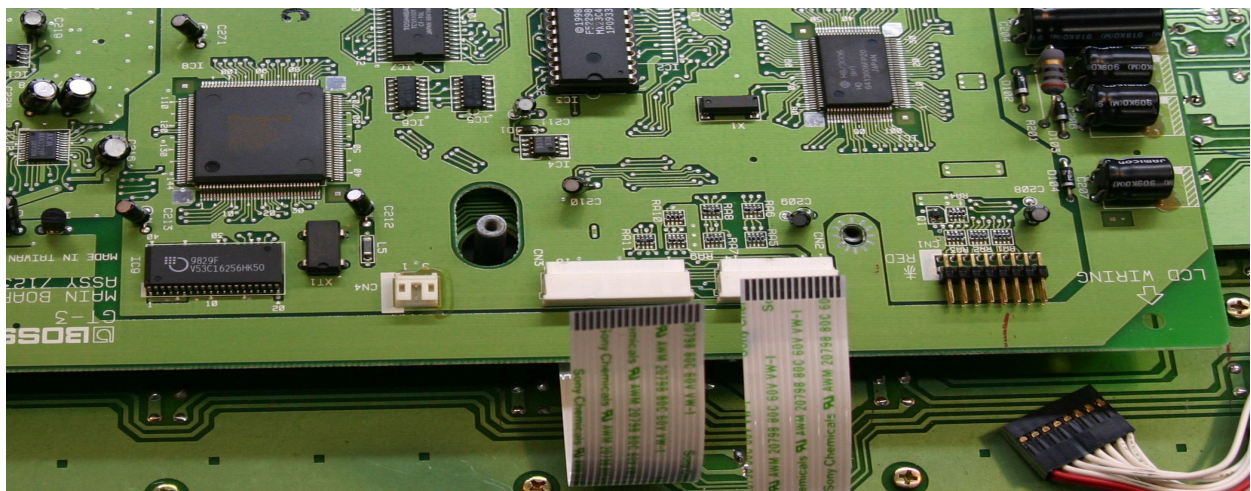
BOSS GT-3 Replacement Display -Installation instructions

1. Place the GT-3 upside down and remove all the screws from the rear cover.
2. On the rear, remove all the nuts and screws from the connectors

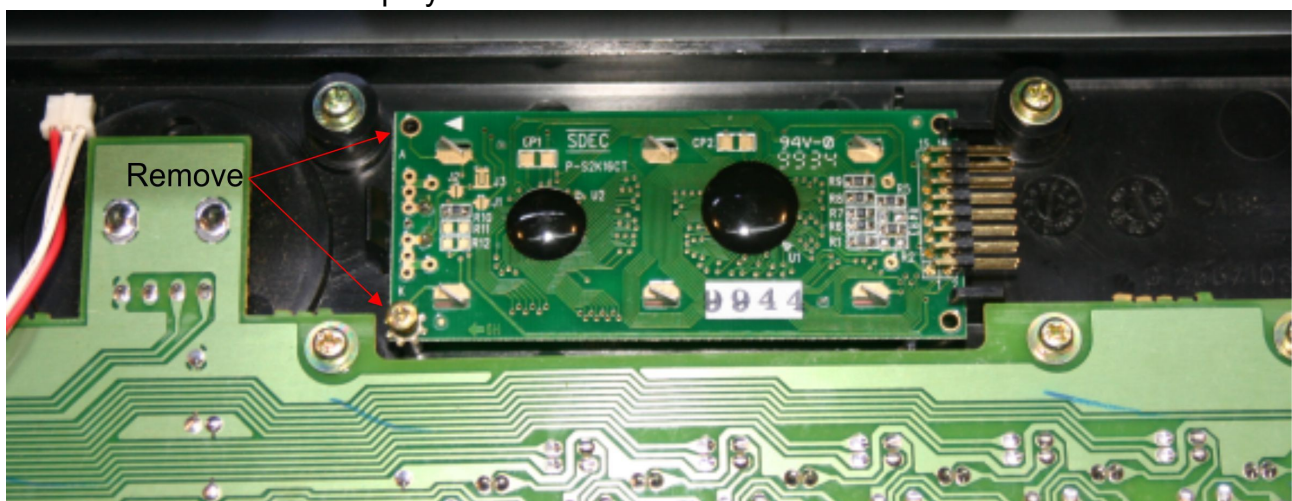


Remove nuts & screws

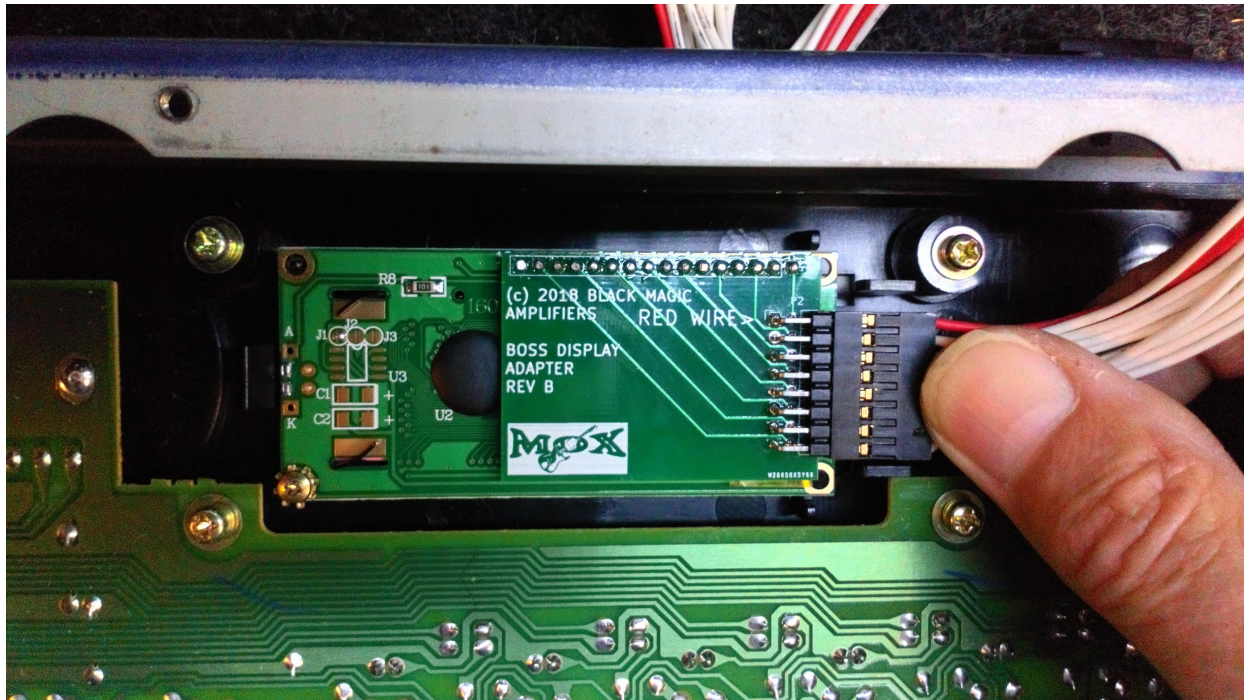
3. Unplug all the cables on the bottom exposed PCB



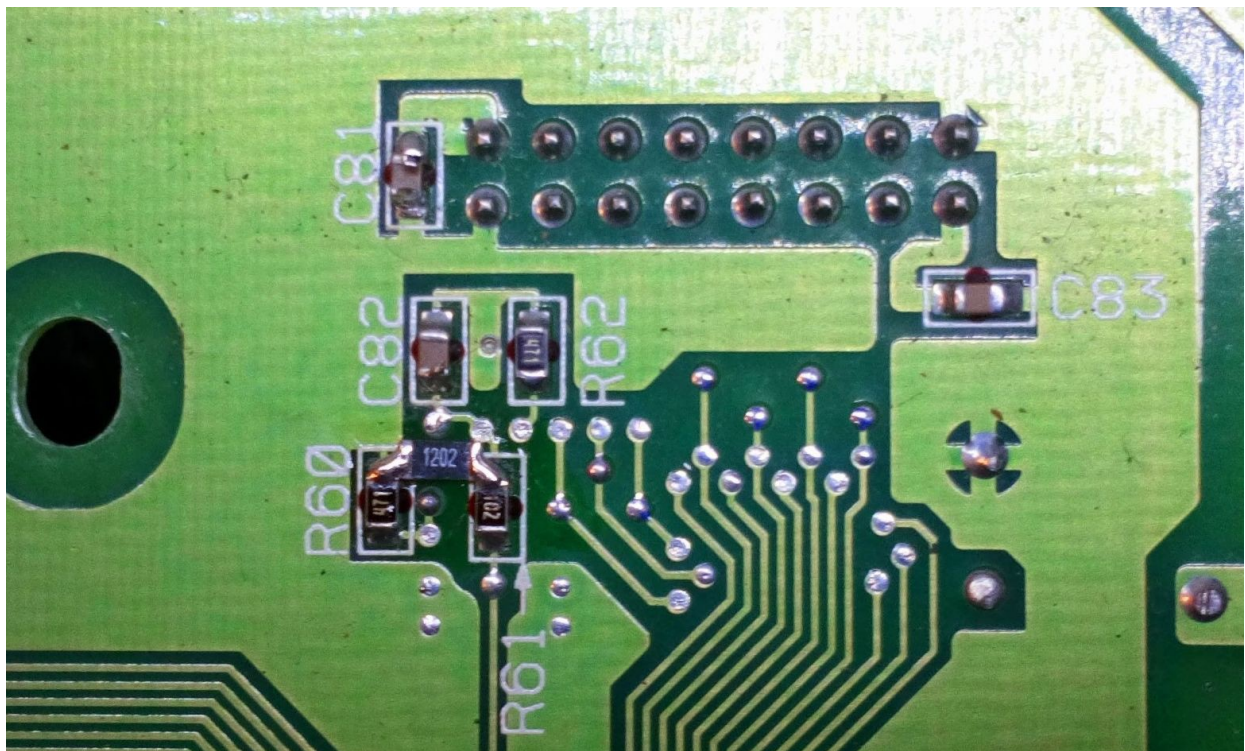
4. Remove all the screws holding the bottom PCB in place.
5. Unplug the cable from the display and remove the screw on the left of the display PCB and then left the display out from the left



6. Place the new display over the top left locating peg and replace the screw from the previous step and attach the cable.



- 7) You can apply some glue to the black plastic tabs to hold the display in place or use a suitable sized piece of foam packing on the rear on the display to compress between the display and the bottom PCB w)hen replaced) to hold the display in place.
- 8) Replace the bottom, reconnect the cables and replace one screw. Connect the power and turn on to test the display. Try the contrast adjustment to see if you can get a satisfactory contrast. If not, you will need to solder the supplied contrast range adjustment resistor to the other side of the bottom PCB as shown here:



- 9) Complete the re-assembly in the reverse order.

Need help? email tech@bmamps.com